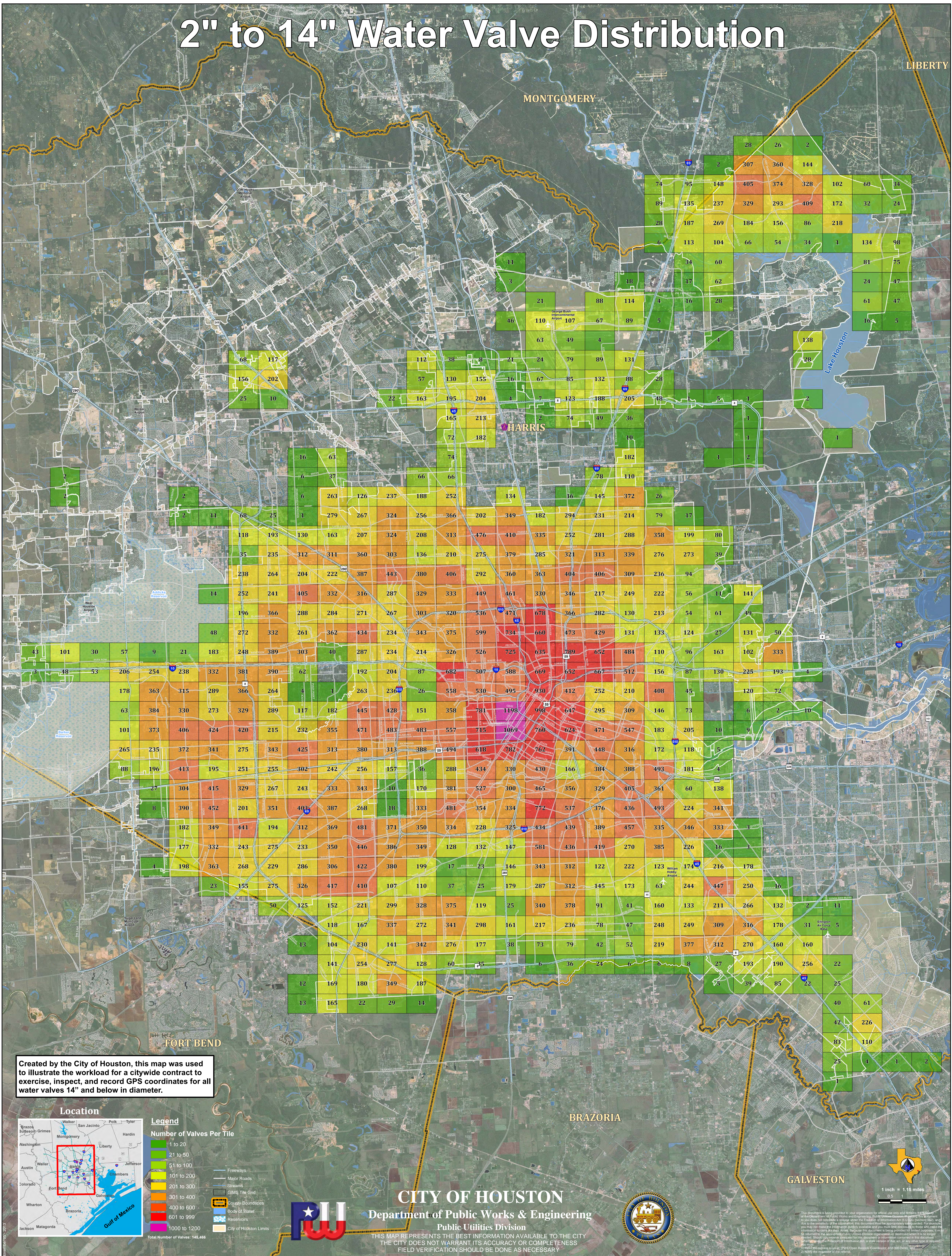
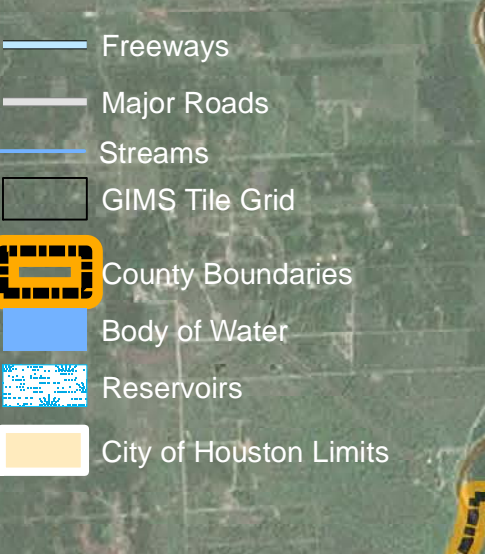
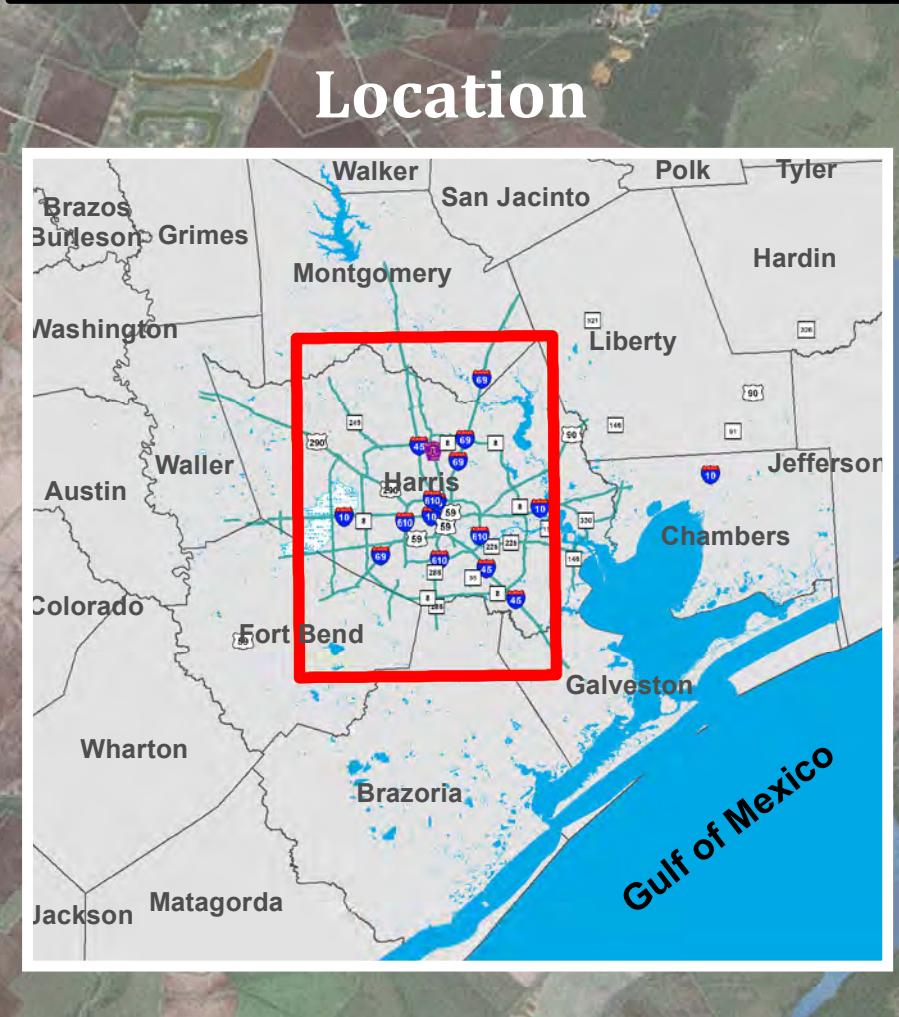


2" to 14" Water Valve Distribution



Created by the City of Houston, this map was used to illustrate the workload for a citywide contract to exercise, inspect, and record GPS coordinates for all water valves 14" and below in diameter.



CITY OF HOUSTON
 Department of Public Works & Engineering
 Public Utilities Division



THIS MAP REPRESENTS THE BEST INFORMATION AVAILABLE TO THE CITY. THE CITY DOES NOT WARRANT ITS ACCURACY OR COMPLETENESS. FIELD VERIFICATION SHOULD BE DONE AS NECESSARY.

1 inch = 1.15 miles
 0 0.5 1 2 Miles

This document is being provided to your organization for official use only and remains the property of the City of Houston. It is not to be distributed, copied, or reproduced in any form without the express written permission of the City of Houston. The City of Houston is not responsible for any errors or omissions in this document. The City of Houston is not responsible for any damages or losses resulting from the use of this document. The City of Houston is not responsible for any claims or liabilities arising from the use of this document. The City of Houston is not responsible for any actions or inactions taken by any third party based on the information contained in this document. The City of Houston is not responsible for any consequences of any decisions made based on the information contained in this document. The City of Houston is not responsible for any actions or inactions taken by any third party based on the information contained in this document. The City of Houston is not responsible for any consequences of any decisions made based on the information contained in this document.