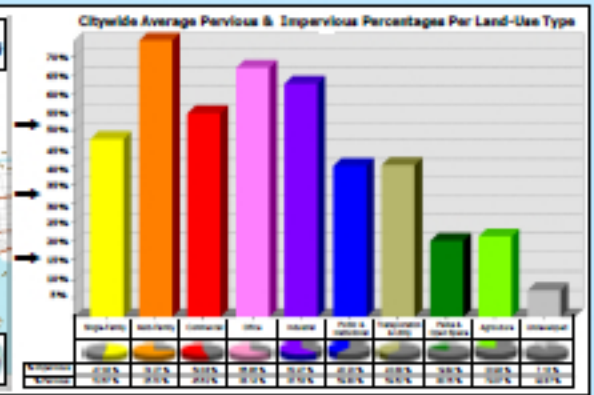
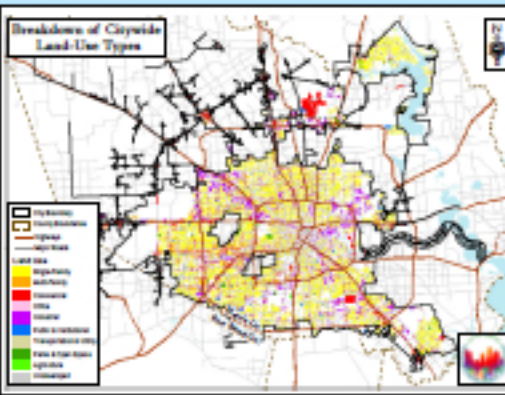
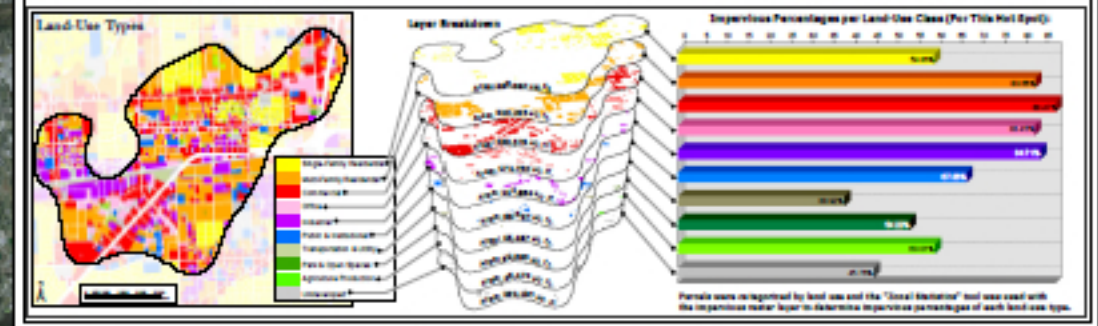
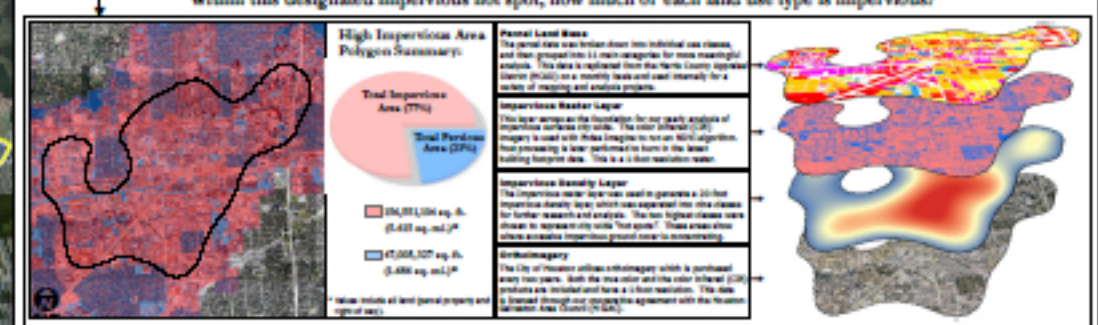
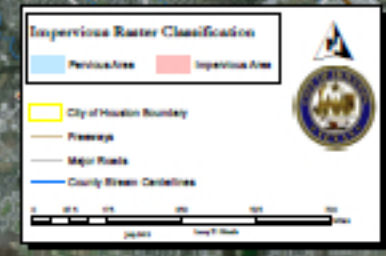
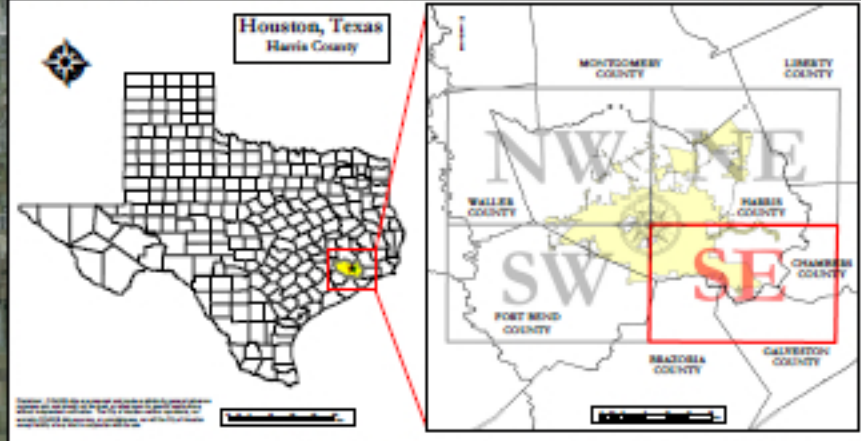
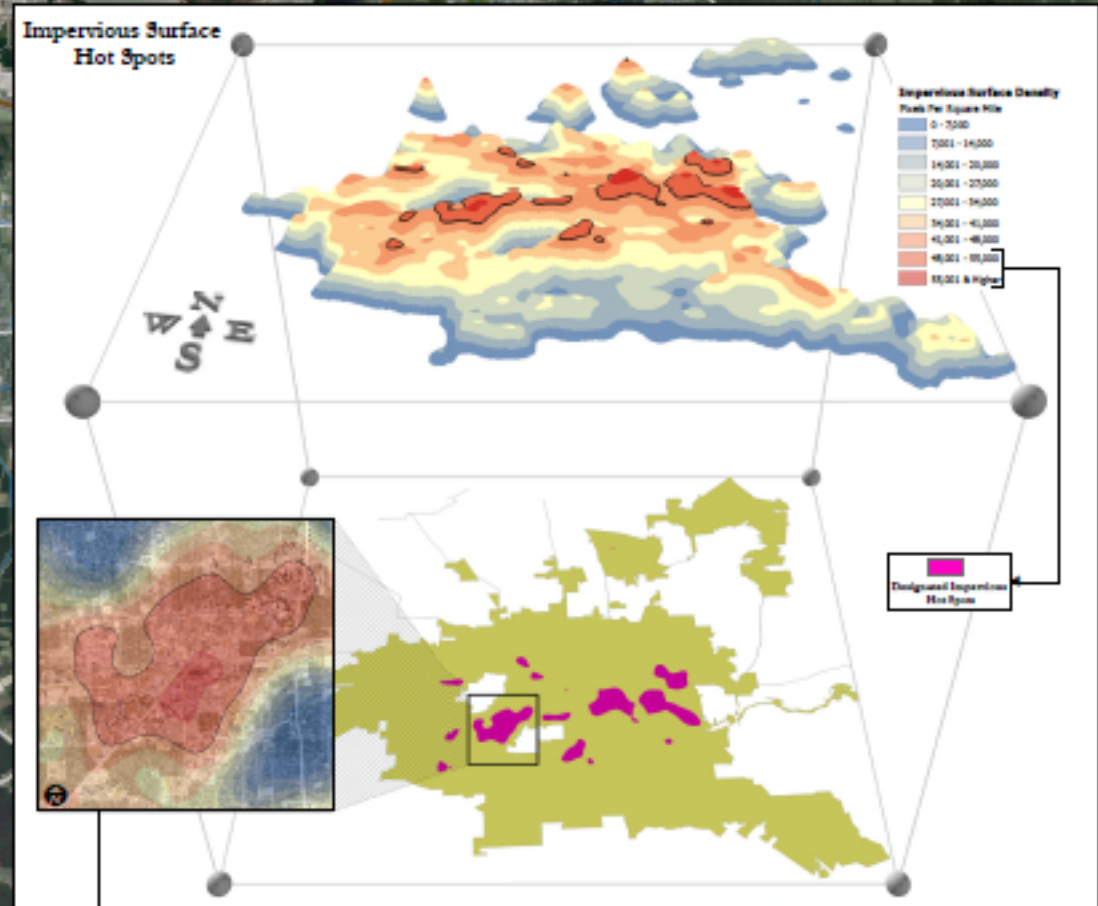
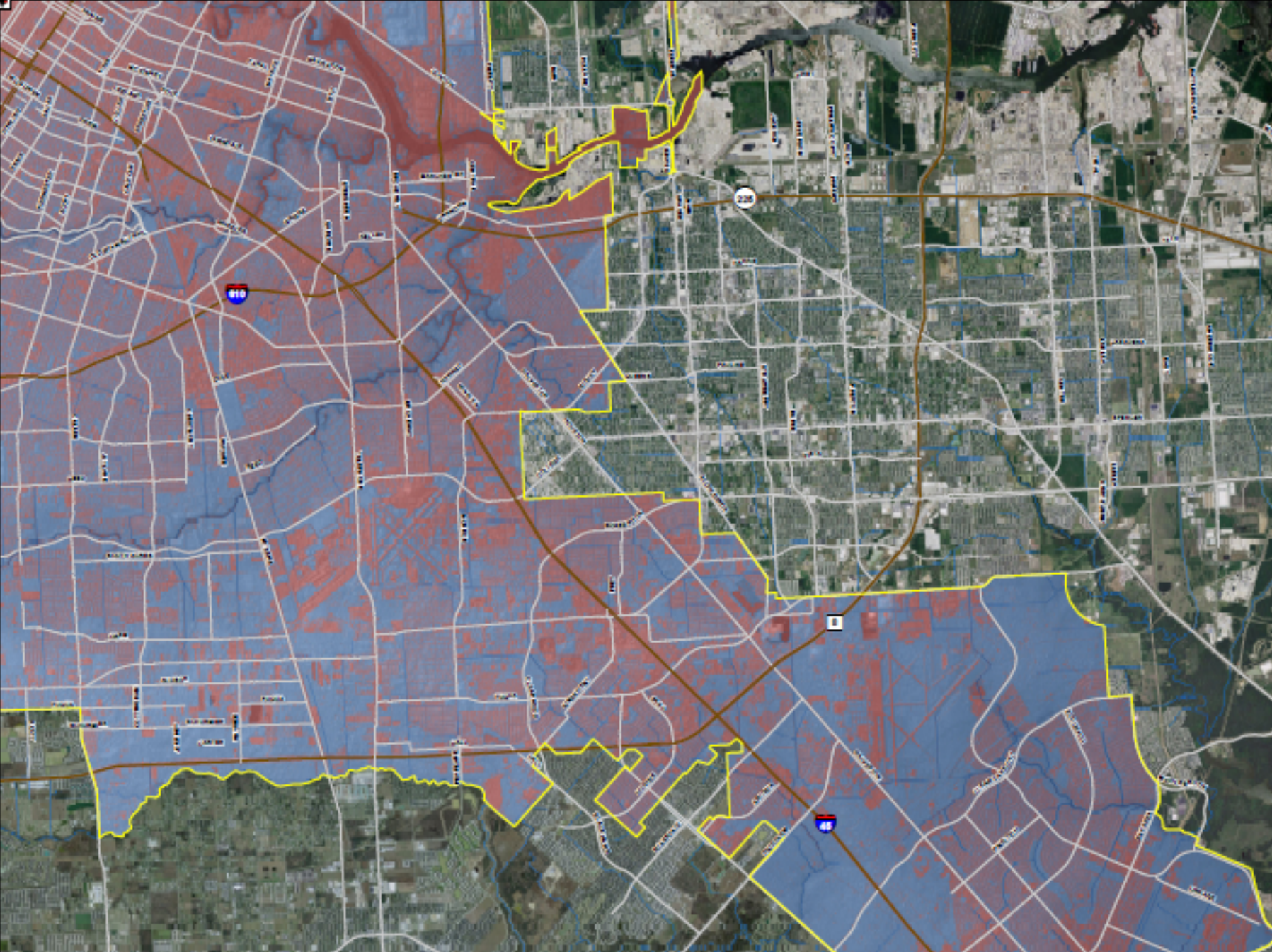


# City of Houston - SE Impervious Surface Analysis

## Combining Data Sources to Aid Drainage



**Map & Data Credits:**  
 iEris Imagine pixel signature generation, spatial analysis, map design and cartography performed by Larry Nantz, GIS, CTV+. Additional spatial analysis, comparative ArcInfo analysis, automation and scripting (iEris Imagine & Python) performed by Daniel Bally, AICP, GIS. The City of Houston GIS Enterprise Geodatabase is maintained by the Planning and Development Enterprise GIS Technical Division.  
 The "Impervious Surface Totals by Super Neighborhood Houston Area Locations" map (NE Quadrant) utilizes the ESRI Community BaseMap, of which the City of Houston contributed. Additional imagery beyond the boundary of the 2010 Houston-Galveston Area Council (H-GAC) licensed aerials was supplied by the ArcGIS Online ESRI World Imagery service. The 2010 aerial imagery (Orthophotography) is used under license from H-GAC. The building footprint data is used under license with the Harris County Appraisal District (HCAAD). Udr data was provided by the Harris County Flood Control District (HCFCD).  
 Disclaimer: iEris data are prepared and made available for general reference purposes only and should not be used, in total or in part, for specific applications, without independent verification. The City of Houston does not warrant iEris data accuracy or completeness, nor will the City of Houston accept liability of any kind in connection with this use. iEris data is not a substitute for survey products.

