



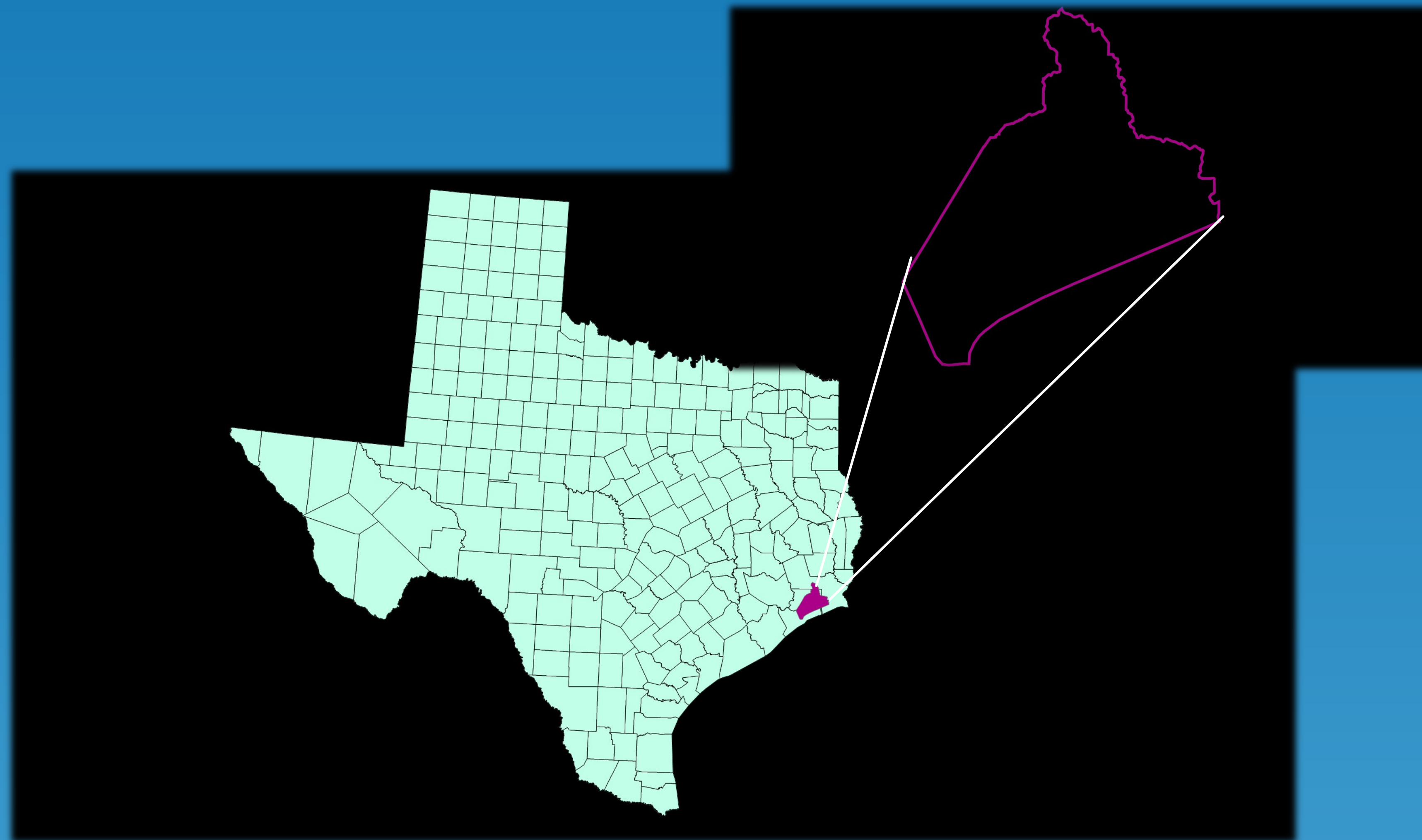
Analysis of Temporal Land Cover Changes in East Galveston Watershed Region of Texas

Sedigheh Heydari* and B. B. Maruthi Sridhar

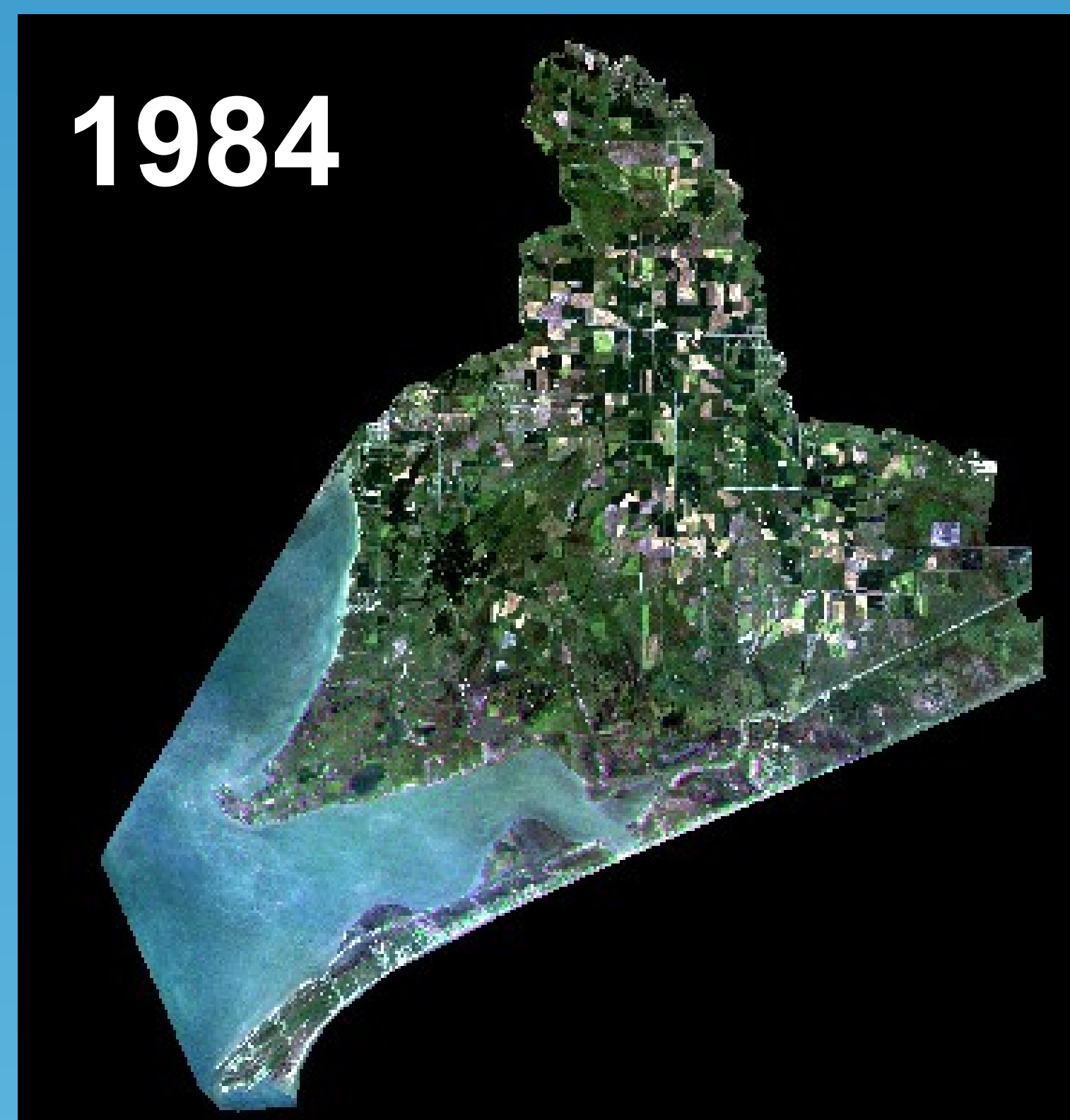
*Email: s.heydari1197@student.tsu.edu

Department of Environmental and Interdisciplinary Sciences, Texas Southern University, Houston, TX.

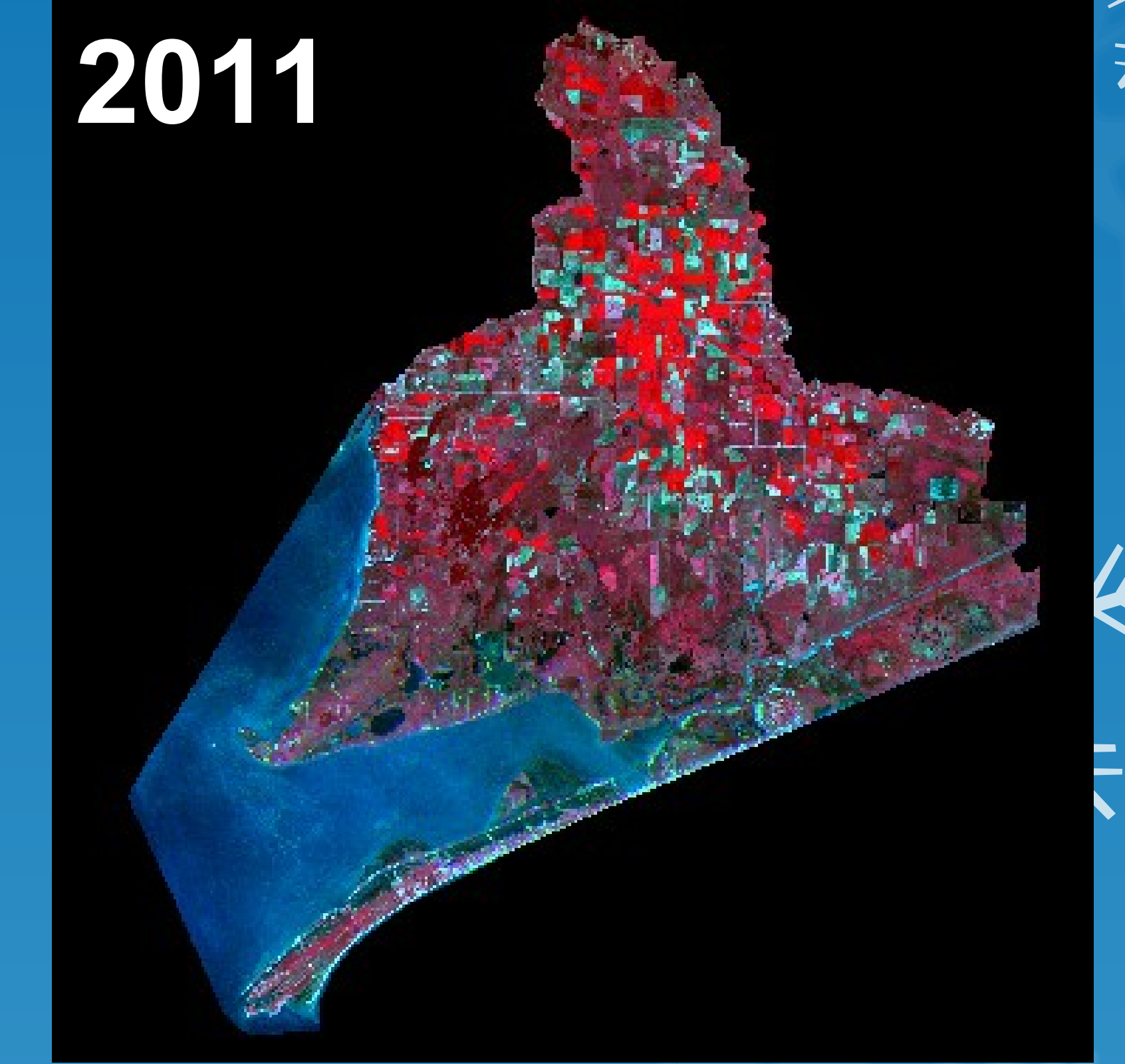
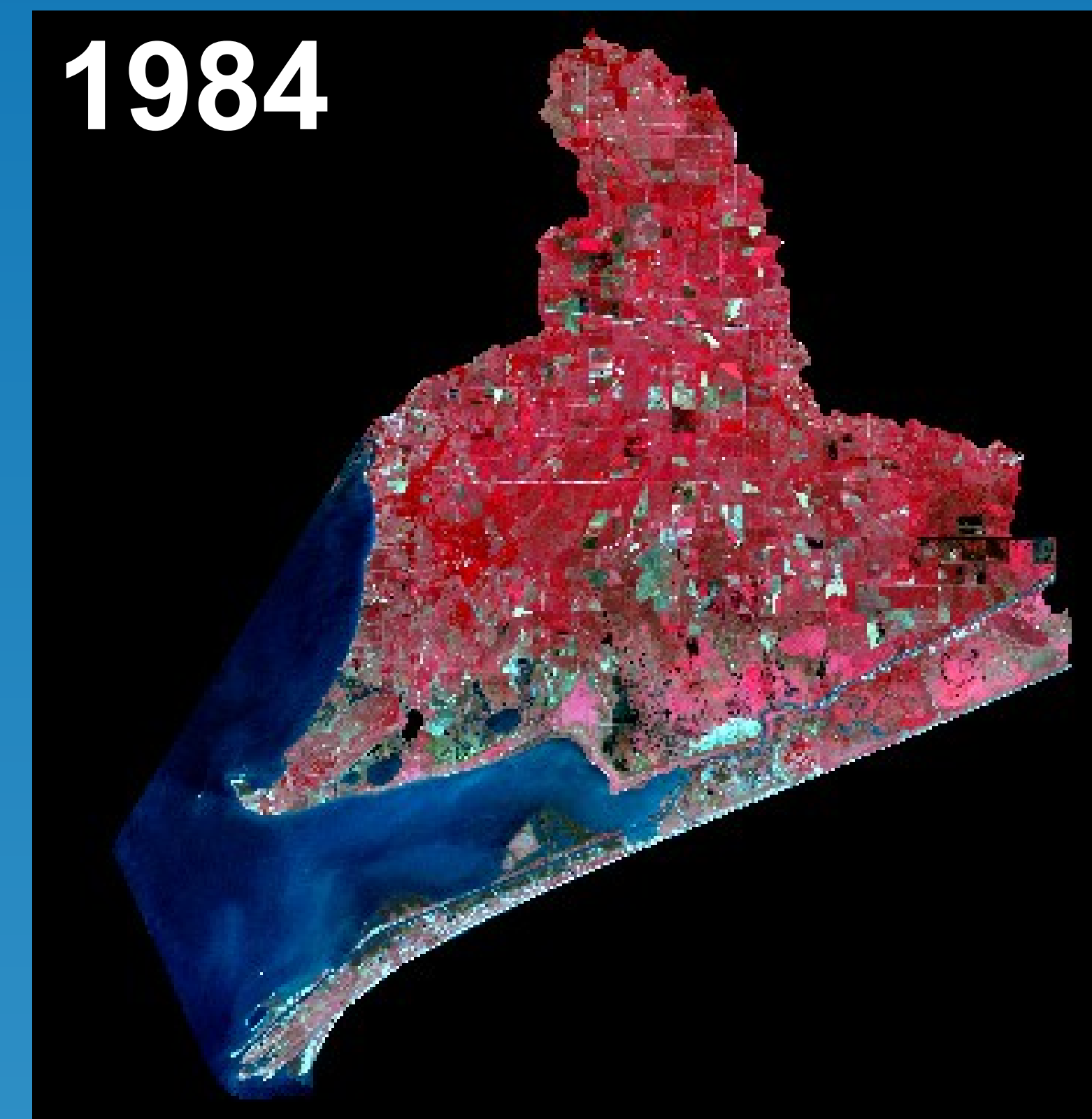
Study Area: East Galveston Bay Watershed Region



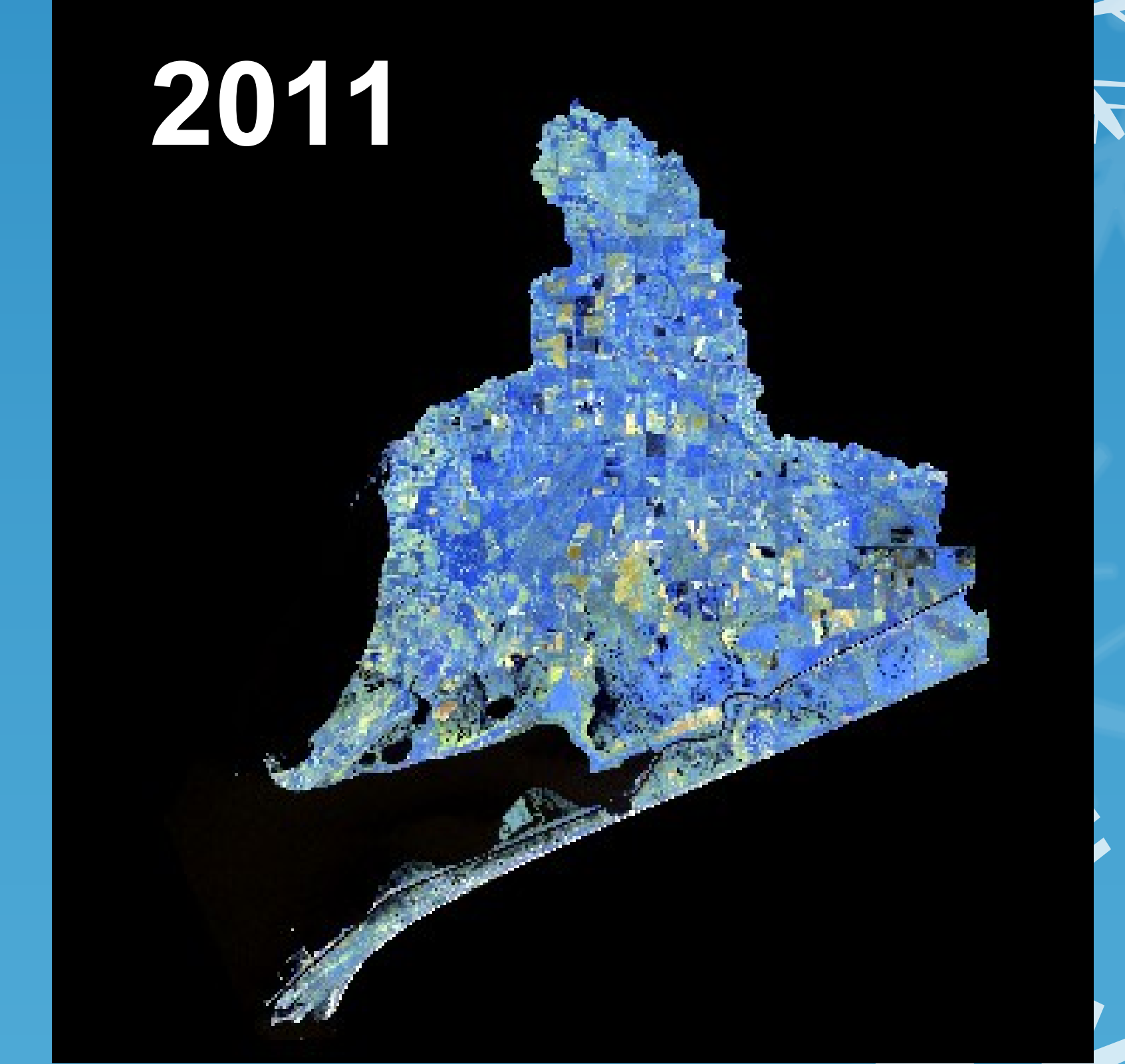
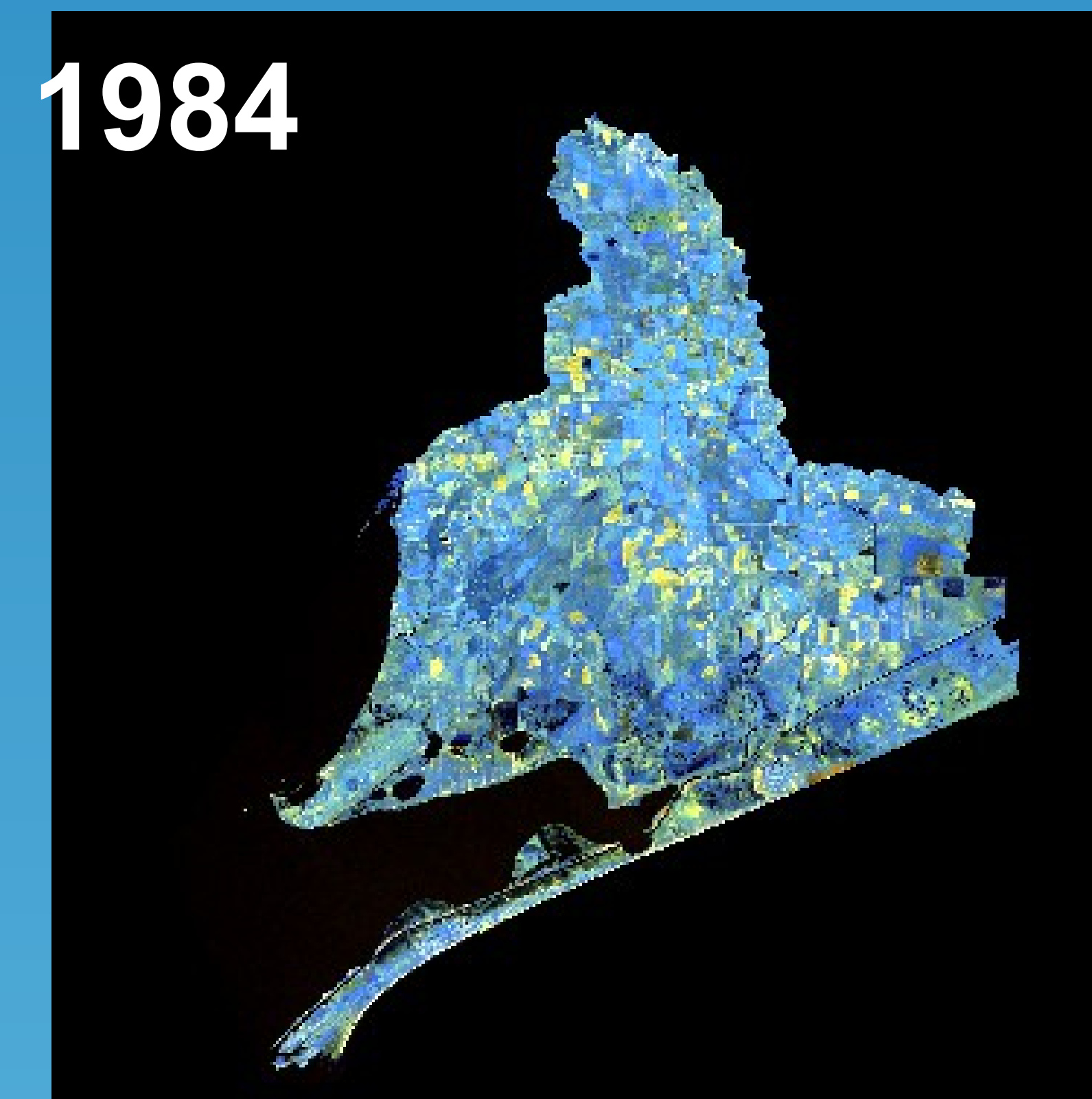
Objective: The objective of the study is to show the land use and land cover changes in the East Galveston Bay watershed region using Landsat imagery.



The natural color imagery of East Galveston Bay Watershed region where Landsat bands 1, 2 and 3 are represented as Blue, Green and Red respectively.



The pseudo color imagery of East Galveston Bay Watershed region where Landsat bands 2, 3 and 4 are represented as Blue, Green and Red respectively. All the vegetation is shown in Red and Water in blue color.



The pseudo color imagery of East Galveston Bay Watershed region where Landsat bands 4, 5 and 7 are represented as Blue, Green and Red respectively. All the vegetation is shown in blue, water in black and bare soil in green.

This project work was done as part of the ES718 – Special Topics in Environmental Toxicology course during the Fall 2014 Semester at Texas Southern University