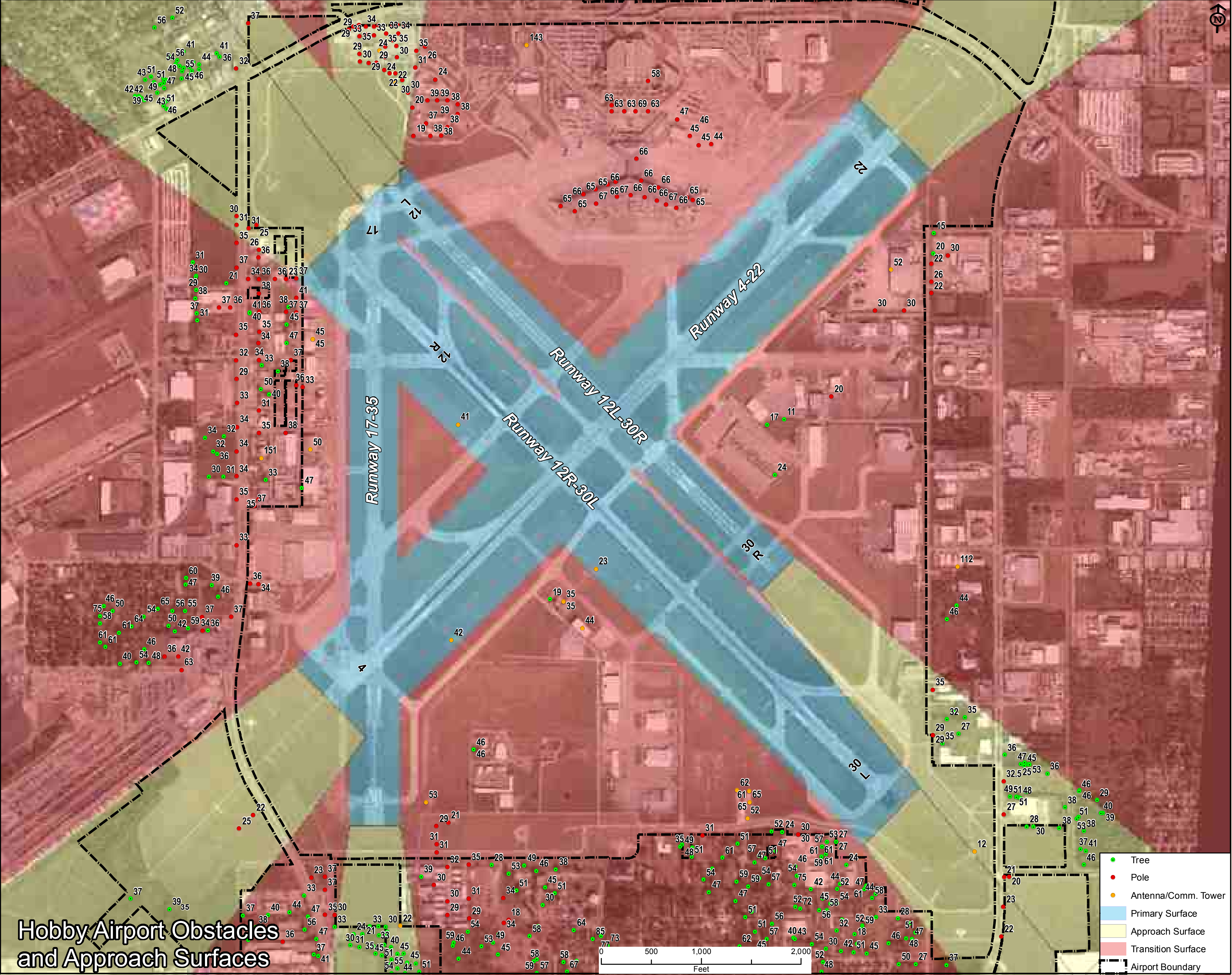
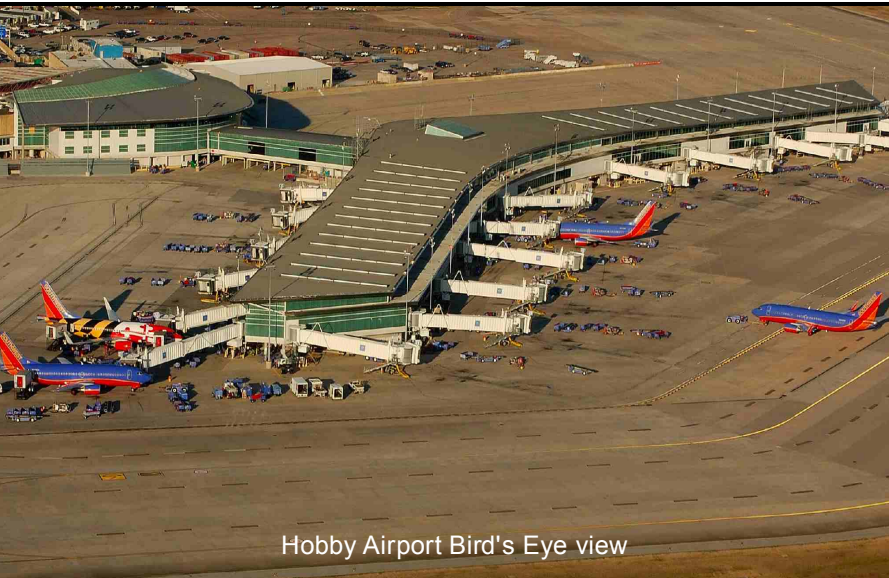


# HOBBY AIRPORT HEIGHT HAZARD STUDY

Shibbir Ahmed  
Date: 11/18/2014



Hobby Airport Obstacles and Approach Surfaces



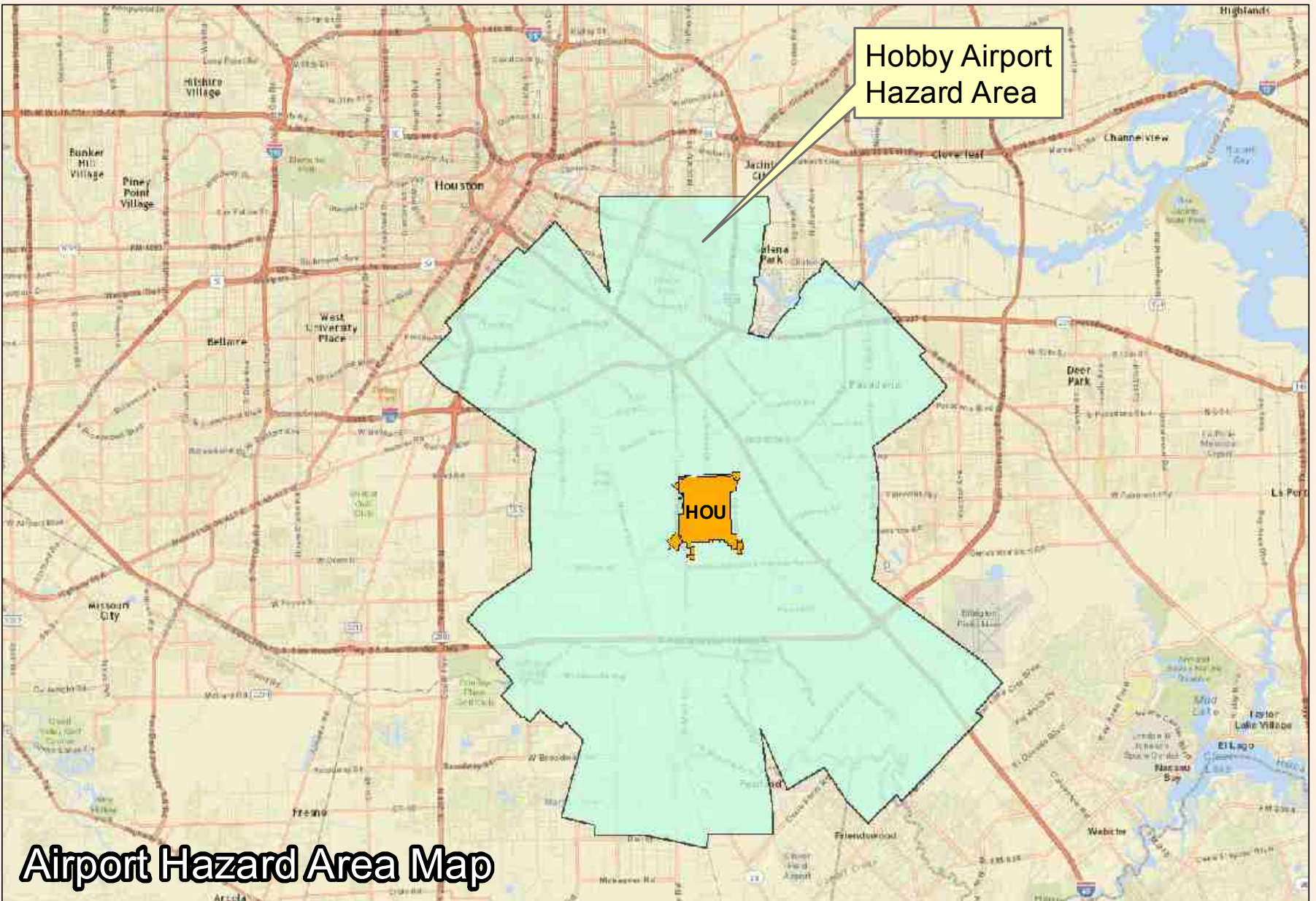
3-D View with FAA Part-77 Surfaces

## Abstract

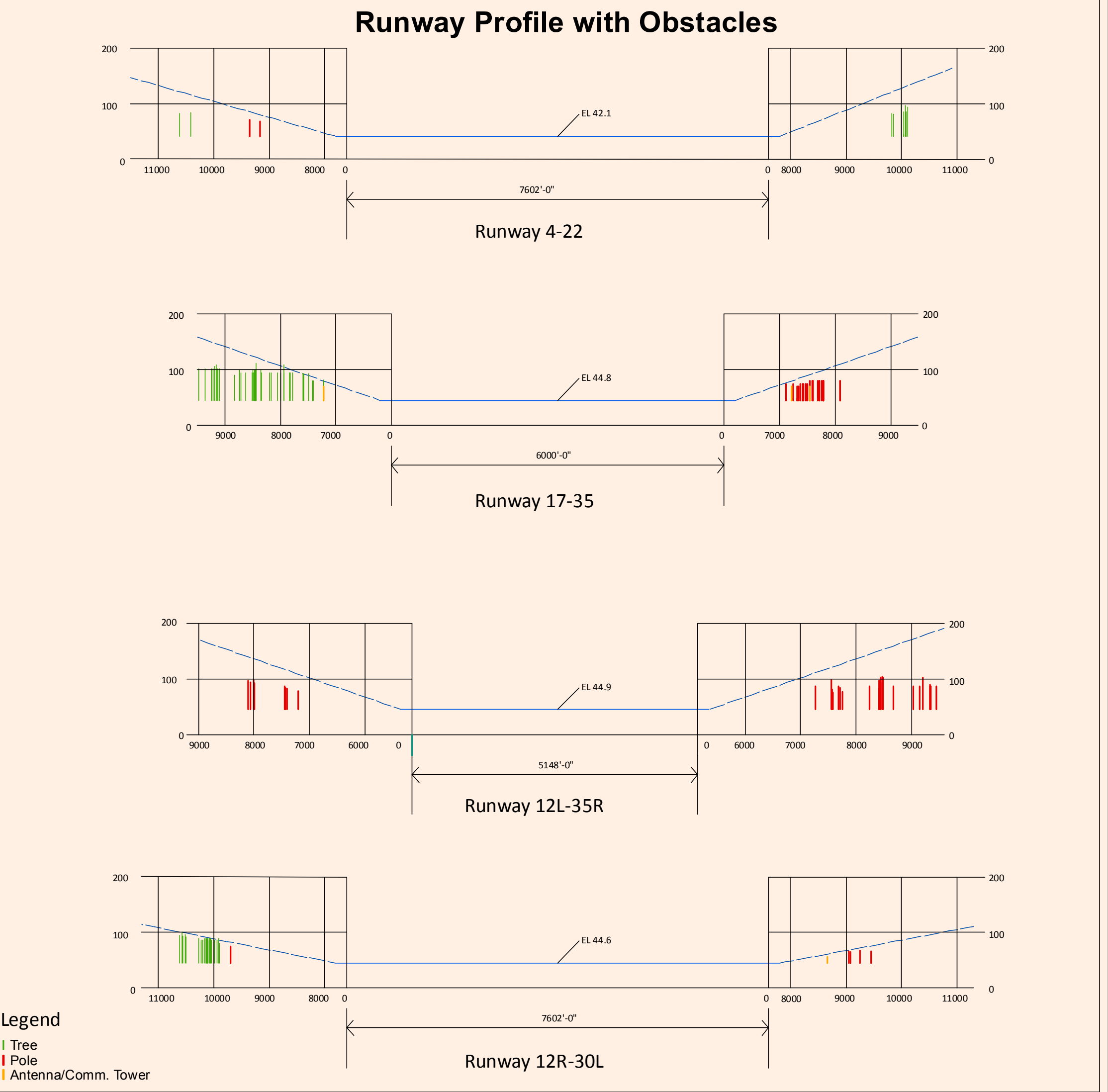
Building heights in the airport area are subject to the Federal Aviation Administration (FAA) regulations for navigable, obstruction free airspace. Houston Airport Commission also establishes aviation policies in Aviation Article VII - Airport Hazard Area Regulations, so that new development in the Airport vicinity will not impact airline service or emergency flight routes.

MyCity, created by City of Houston Enterprise GIS can be used to find maximum Building Heights allowed at any point in the airport. It falls under Airport Hazard Area Regulations.

In this study of height hazard, we focus on William P. Hobby Airport, Houston. It is the oldest commercial airport in Houston, TX, 7 miles from the downtown Houston. First opened in 1927 as a private airfield, WT Carter Field, the airport was purchased by the City of Houston in 1937 and renamed Houston Municipal Airport. The current name was given to the airport in 1967, in honor of ex-governor William P. Hobby.



Airport Hazard Area Map



3-D View with Airport Hazard Area

