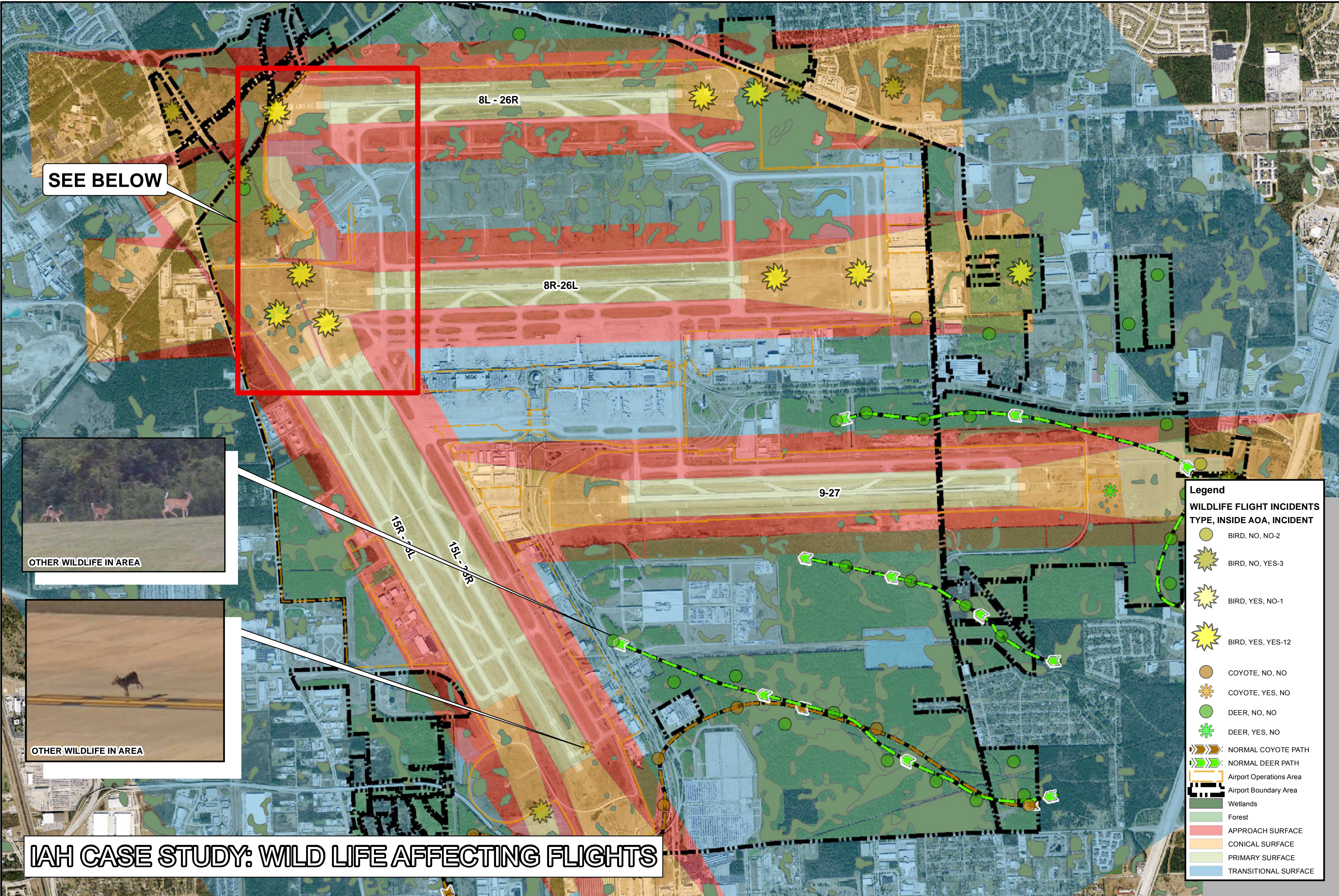




BUSH INTERCONTINENTAL AIRPORT WILDLIFE - FLIGHT IMPACT STUDY

JDC
Date: 11/14/2014



IAH CASE STUDY: WILD LIFE AFFECTING FLIGHTS



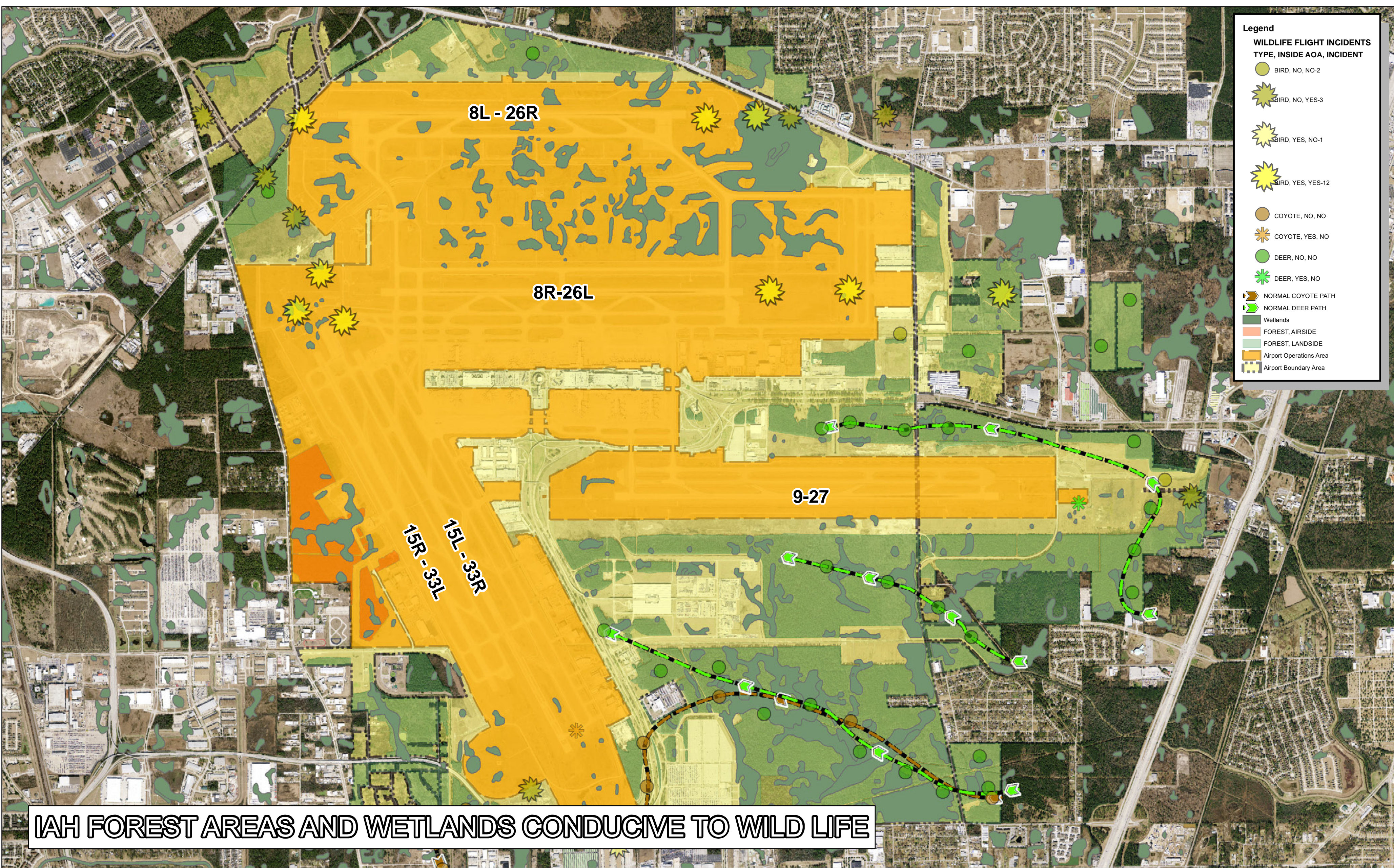
Bird Strike

A bird strike—sometimes called birdstrike, bird ingestion (for an engine), bird hit, or BASH (for Bird Aircraft Strike Hazard)—is a collision between an airborne animal (usually a bird or bat) and a human-made vehicle, especially aircraft. The term is also used for bird deaths resulting from collisions with human-made structures such as power lines, towers and wind turbines.

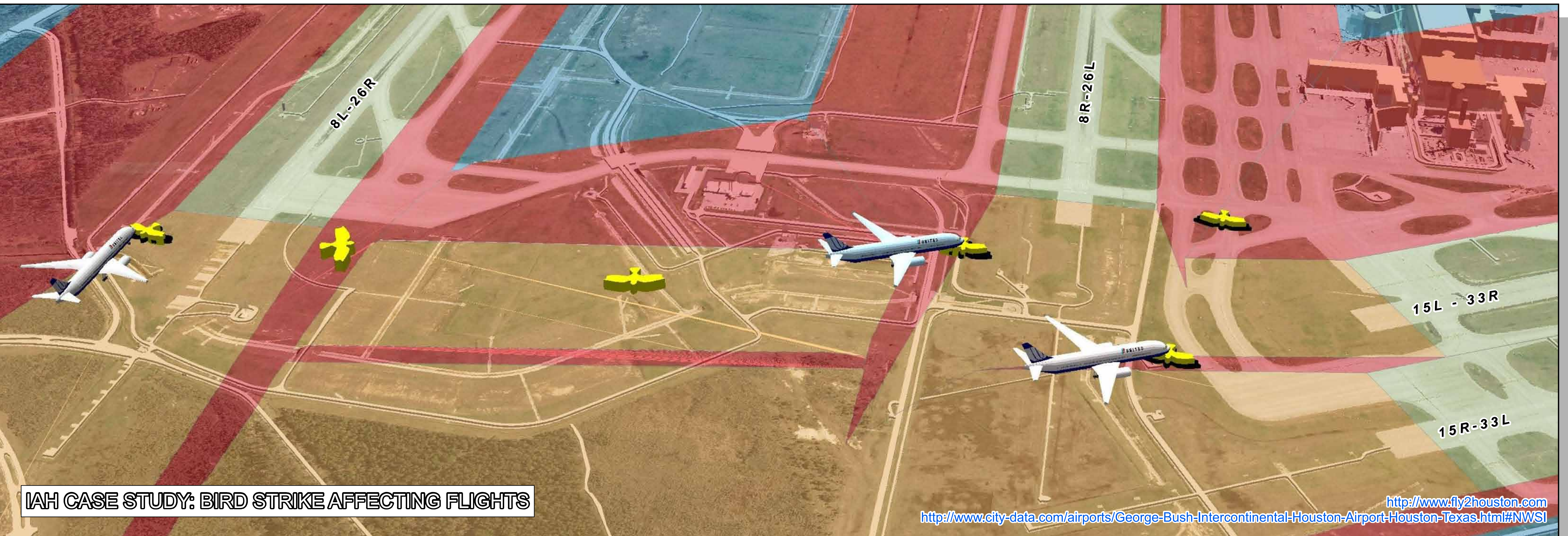
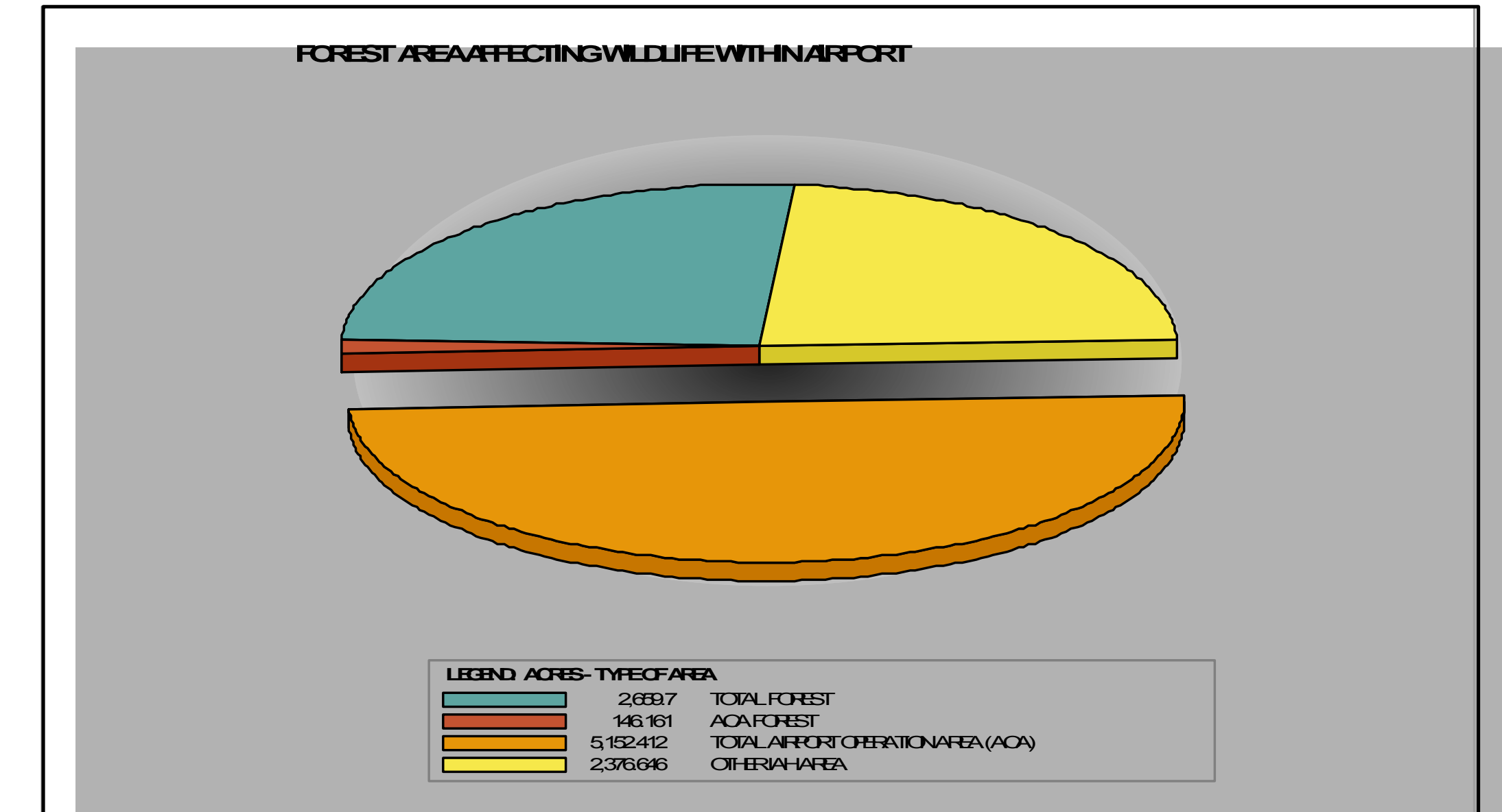
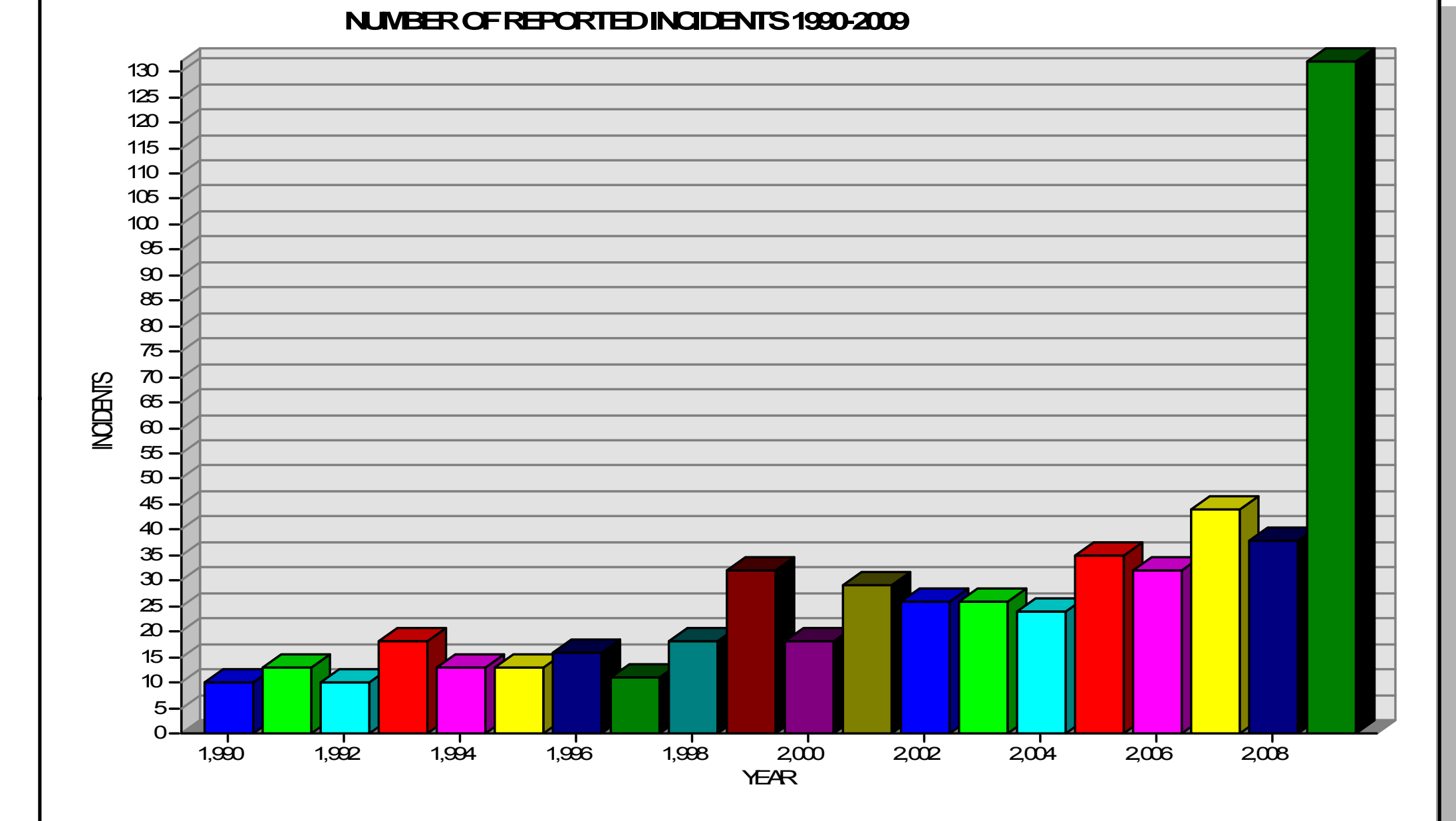
Bird strikes are a significant threat to flight safety, and have caused a number of accidents with human casualties. The number of major accidents involving civil aircraft is quite low and it has been estimated that there is only about 1 accident resulting in human death in one billion flying hours. The majority of bird strikes (65%) cause little damage to the aircraft; however the collision is usually fatal to the bird(s) involved.

Most accidents occur when the bird hits the windshield or flies into the engines. These cause annual damages that have been estimated at \$400 million within the United States of America alone and up to \$1.2 billion to commercial aircraft worldwide.

Reported Wildlife Strike Incidents	
2009-11-29	Time: Dawn. Operator: Continental Airlines. Aircraft: B-777-300ER. Mass: 27,000 kg. Engines: 2. Power Type: Turbofan. Turbine: T22. Remarks: Collected: No. Runway: 28L. Phase of Flight: Approach. Bird: Struck: 1. Species: BIRD. Size: Small. Pilot: No report. Report Type: FAA Form 5200-7.
2009-11-29	Time: Day 14:15. Sky: Overcast. Operator: ExpressJet (Continental Express). Aircraft: EMB-145. Mass: 5,700 kg. Engines: 2. Power Type: Turbofan. Turbine: T22. Remarks: Collected: No. Runway: 28L. Phase of Flight: Landing Roll. Bird: Struck: 1. Species: BIRD. Size: Small. Pilot: No report. Report Type: FAA Form 5200-7.
2009-11-27	Time: Dawn (05:30). Sky: No Cloud. Precipitation: None. Operator: Continental Airlines. Aircraft: B-777-300ER. Mass: 27,000 kg. Engines: 2. Power Type: Turbofan. Turbine: T22. Remarks: Collected: No. Runway: 28L. Phase of Flight: Landing Roll. Bird: Struck: 1. Species: BIRD. Size: Small. Pilot: No report. Report Type: FAA Form 5200-7.
2009-11-24	Time: Day. Sky: Clear. Precipitation: None. Operator: Continental Airlines. Aircraft: B-777-300ER. Mass: 27,000 kg. Engines: 2. Power Type: Turbofan. Turbine: T22. Remarks: Collected: No. Runway: 28L. Phase of Flight: Approach. Bird: Struck: 1. Species: BIRD. Size: Small. Pilot: No report. Report Type: FAA Form 5200-7.
2009-11-21	Time: Night (17:50). Sky: Some Cloud. Precipitation: None. Operator: Continental Airlines. Aircraft: B-777-300ER. Mass: 27,000 kg. Engines: 2. Power Type: Turbofan. Turbine: T22. Remarks: Collected: No. Runway: 28L. Phase of Flight: Landing Roll. Bird: Struck: 1. Species: BIRD. Size: Small. Pilot: No report. Report Type: FAA Form 5200-7.
2009-11-18	Time: Night (18:00). Sky: No Cloud. Precipitation: None. Operator: Continental Airlines. Aircraft: B-777-300ER. Mass: 27,000 kg. Engines: 2. Power Type: Turbofan. Turbine: T22. Remarks: Collected: No. Runway: 28L. Phase of Flight: Landing Roll. Bird: Struck: 1. Species: BIRD. Size: Small. Pilot: No report. Report Type: FAA Form 5200-7.
2009-11-17	Time: Dawn (05:30). Sky: No Cloud. Precipitation: None. Operator: Continental Airlines. Aircraft: B-777-300ER. Mass: 27,000 kg. Engines: 2. Power Type: Turbofan. Turbine: T22. Remarks: Collected: No. Runway: 28L. Phase of Flight: Landing Roll. Bird: Struck: 1. Species: BIRD. Size: Small. Pilot: No report. Report Type: FAA Form 5200-7.
2009-11-06	Time: Dawn (05:30). Sky: No Cloud. Precipitation: None. Operator: Continental Airlines. Aircraft: B-777-300ER. Mass: 27,000 kg. Engines: 2. Power Type: Turbofan. Turbine: T22. Remarks: Collected: No. Runway: 28L. Phase of Flight: Landing Roll. Bird: Struck: 1. Species: BIRD. Size: Small. Pilot: No report. Report Type: FAA Form 5200-7.
2009-11-05	Time: Day 17:50. Sky: No Cloud. Precipitation: None. Operator: Continental Airlines. Aircraft: B-777-300ER. Mass: 27,000 kg. Engines: 2. Power Type: Turbofan. Turbine: T22. Remarks: Collected: No. Runway: 28L. Phase of Flight: Landing Roll. Bird: Struck: 1. Species: BIRD. Size: Small. Pilot: No report. Report Type: FAA Form 5200-7.
2009-11-02	Time: Day 17:50. Sky: No Cloud. Precipitation: None. Operator: Continental Airlines. Aircraft: B-777-300ER. Mass: 27,000 kg. Engines: 2. Power Type: Turbofan. Turbine: T22. Remarks: Collected: No. Runway: 28L. Phase of Flight: Landing Roll. Bird: Struck: 1. Species: BIRD. Size: Small. Pilot: No report. Report Type: FAA Form 5200-7.
2009-11-01	Time: Day 17:50. Sky: No Cloud. Precipitation: None. Operator: Continental Airlines. Aircraft: B-777-300ER. Mass: 27,000 kg. Engines: 2. Power Type: Turbofan. Turbine: T22. Remarks: Collected: No. Runway: 28L. Phase of Flight: Landing Roll. Bird: Struck: 1. Species: BIRD. Size: Small. Pilot: No report. Report Type: FAA Form 5200-7.



IAH FOREST AREAS AND WETLANDS CONDUCIVE TO WILD LIFE



IAH CASE STUDY: BIRD STRIKE AFFECTING FLIGHTS